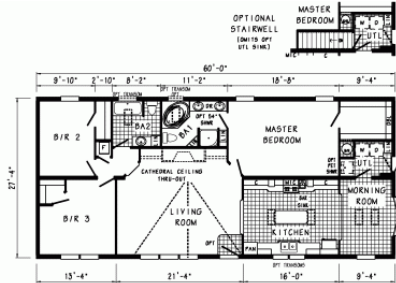




BROOKWOOD RANCH MODEL BW625A



BW625-A 2860 Approx. 1640 Sq. Ft.

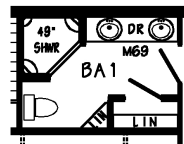
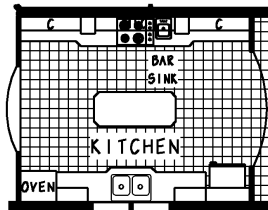
OPT TRANSOM WINDOW(S) AVAILABLE WITH OPT 9' CEILING ONLY

BROOKWOOD
Commodore Homes of Pennsylvania

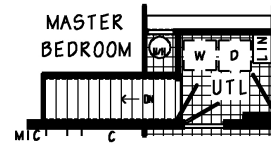
Series: Brookwood Ranch
Model: BW625A
Style: Ranch
Bedrooms: 3
Bathrooms: 2
Sq. Ft.: 1640

Floor Plan

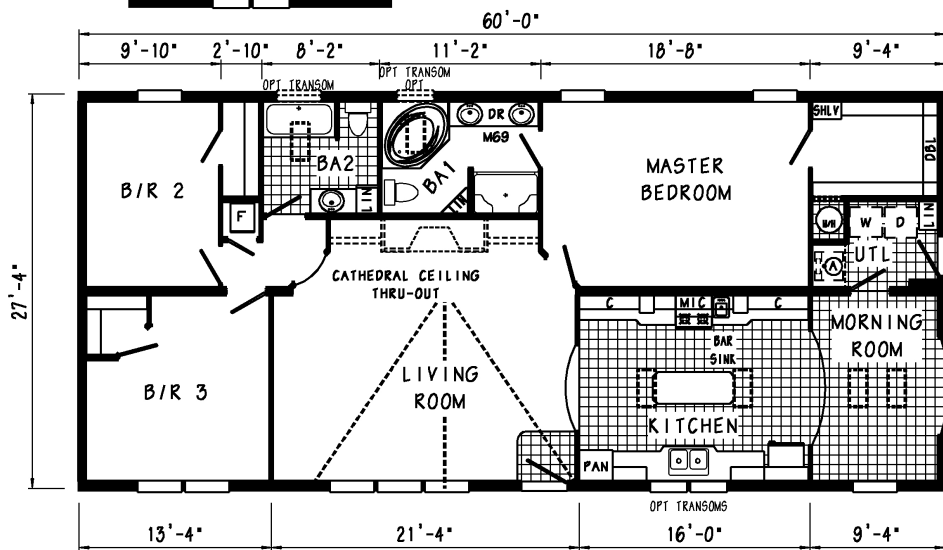
OPTIONAL WALL OVEN & SURFACE UNIT



OPT CORNER SHOWER



OPTIONAL (OMITS OPT UTL SINK)



BW625-A 2860 Approx. 1640 Sq. Ft.

OPT TRANSOM WINDOW(S) AVAILABLE WITH OPT 9' CEILING ONLY

⊙ = STD FRZ SPC.
⊙ = OPT UTL SINK OR BENCH.

BROOKWOOD
Commodore Homes of Pennsylvania



Standards and Features for Brookwood Ranch

INTERIOR

- Primed Smooth Drywall Throughout
- Cathedral Ceiling Throughout
- Flat Ceiling Throughout in BW635A BW637A, BW644A and BW646A Only
- Stipple Ceiling
- 7'0" Sidewall Height
- 8'0" Sidewall Height in BW637A, BW635A, BW644A and BW646A Only
- Plush Carpet Protected by Stain Safety
- Rebond Carpet Pad
- Tackstrip Carpet Installation
- Foyer Entry with Vinyl Flooring
- No-Wax Vinyl Floor Coverings by Congoleum
- 5-Arm Brushed Nickel Dining Room Light with Down Light
- Scavo Nook Light
- Glass Light Shades Throughout
- Pre-Hung Door Jambs
- Pinned Mortise Hinges
- Metal Interior Passage Sets
- Floor Mount Door Stops
- Smoke Detectors With Battery Back-Up
- Wire Shelving in Guest Closet
- Designer-Coordinated Window Treatments

KITCHEN

- Classic Craft Cabinetry (KCMA Approved)
- Hardwood Raised Panel
- Cabinet Doors
- Hardwood Cabinet Face Frames
- Upgrade Cabinet Hardware
- Concealed Cabinet Hinges
- Lined Overhead Cabinets
- Crown Moulding with Rope Insert on Overhead Cabinets
- 30" Height Overhead Cabinets
- Adjustable Shelves in Overhead Cabinets
- Drawer-Over-Door Base Cabinets
- Deluxe Roller Guide Drawer System
- Adjustable Center Shelf in Base Cabinets
- 25" High-Pressure Laminate Countertops
- Bevel-Edge Countertops
- 4" Laminate Backsplash
- No-Wax Vinyl Floor Coverings by Congoleum
- White Porcelain Sink - 33x22x10
- Huntington Brass Brushed Nickel Single Lever Faucet
- Tip-Out Trays at Sink

APPLIANCES

- 30" Gas Range
- Over The Range Microwave Oven in
- Models BW625A, BW626A, BW629A, BW635A, BW638A Only
- Power Range Hood with Light
- 18 Cubic Foot, No-Frost Refrigerator

BATHS

- 60" One-Piece Fiberglass Tub/Showers
- One-Piece Fiberglass Shower with Glass Door in Glamour Baths
- Fiberglass Tub in Glamour Baths
- Decorative Mirror Treatments In Glamour Baths
- Deluxe Overdrape at 60" Tubs
- 1.6 Gallon Per Flush Elongated Toilets
- Vitreous China Stool, Tank and Lid
- Vitreous China Sinks With Overflows and Pop-Up Drains
- 4" Laminate Backsplash at Vanities
- 4" Laminate Backsplash at Tub Deck
- High-Pressure Laminate Countertops
- Bevel-Edged Countertops
- Lighted Vent Fan in Each Bath
- Hardwood Raised Panel Cabinet Doors
- Hardwood Cabinet Face Frames
- Upgrade Cabinet Hardware
- Concealed Cabinet Hinges
- Base Shelf in Vanities
- 33" High Vanities
- Huntington Brass Brushed Nickel Faucets

BEDROOMS

- Ceiling Lights
- Egress Window Each Bedroom
- Wire Shelving in Wardrobes
- 30" Interior Passage Doors
- Switched Light in All Walk-In Closets

UTILITIES

- Washer and Dryer Area with a Wire Shelf
- Sink in Utility Room - BW630A Only
- 100 AMP Electrical Service
- Plumb and Wire for Washer
- Wire and Vent for Dryer
- 40 Gallon Electric Water Heater with Pan
- Auto Ignition Gas Furnace:
- #M1-MB077ABW - 56' and Under
- #M1-MB090ABW - 60' and Over
- Woodgrain Furnace Door
- Air Exchanger System for Furnace
- Perimeter Heat System
- Aluminum Heat Ducts
- In-Floor Cross over Heating System
- Copper Wiring Throughout
- Main Water Line Shut-Off Valve
- Water Shut-Off Valves Where Accessible
- One Exterior Water Faucet
- Programmable Thermostat



INSULATION

- R-22 Fiberglass Insulation in Floor
- R-19 Fiberglass Insulation in Walls
- R-31 Avg. Blown Insulation in Ceiling

EXTERIOR

- Nickel Lantern Light at Front Door
- 3/12 Pitch Shingle Roof With Fixed Eaves
- 38x76 Steel 9-Panel Front Door With Storm Door and Deadbolt Lock
- Brushed Nickel Coach Light at Rear Door
- 5/12 Pitch Roof With Architectural Shingles on Models BW635A, BW637A, BW644A and BW646A Only
- 34x76 Steel 9-Lite Rear Door with Storm Door and Deadbolt Lock
- One GFI-Protected Exterior Receptacle
- Saddle Roof on BW630A Only
- Vinyl Insulated Windows with Low-E Glass, Grids and Wood Sills
- Vinyl Dutch Lap Siding
- Ridgevent Roof Ventilation System
- 15" Louvered Shutters on Door Side
- O.S.B. Sheathing Under Siding

CONSTRUCTION

- Energy Star Certified on Selected Models
- 2x6 Exterior Walls on 16" Centers
- Recessed Frame Design
- 2x6 Transverse Floor System on 16" Centers
- 30# Roof Load

WARRANTY

- MHWC 10-Year Limited Warranty

Options

Attic Access/Stairwells

- Attic Access with Pull Down Stairs
- Attic Access with Stairwell

Bathrooms

- #MO-94A Medicine Cabinet
- Recessed Medicine Cabinet
- Diamond Glass Block Window over Tub
- #MO-94B Medicine Cabinet
- Millennia 18" Linen
- 49" Corner Shower
- #MO-103A Medicine Cabinet
- Millennia Bath Lav Cabinet(s)
- 54" Shower
- #MO-95A Cosmetic Box
- Dream Oasis Bath
- 54" Ceramic Shower with Moulded Seat
- #MO-95 Cosmetic Box
- 24x27 Vinyl Window over Stool
- Curved Shower Rod
- #TT2141G Medicine Cabinet over Stool
- 46x40 Vinyl Arch Top Window at Tub
- Soaker Tub Replacing Corner Tub
- #TT2832 Linen Cabinet over Stool
- 34x42 Glass Block Window at Tub
- Linen Cabinet with 4 Drawers in Bottom

Cabinetry - KCMA Certified

- Georgetown Oak - Flat Cathedral
- Georgetown Oak - Shaker
- Natural Maple - Raised Panel Square
- Georgetown Oak - Flat Square
- Mocha Maple - Raised Panel Cathedral
- Ropoe Insert Moulding on Kitchen Overhead Cabinets
- Georgetown Oak - Raised Panel Cathedral
- Mocha Maple - Raised Panel Square
- Under Cabinet Moulding on Kitchen Overhead Cabinets
- Georgetown Oak - Raised Panel Square
- Natural Maple - Raised Panel Cathedral

Ceilings

- Smooth Flat Ceilings
- White Ceiling Cove Moulding

Closets

- #MF-343C Tower for Wk-In-Closets

Computer Centers

- #MF-265 Computer Center
- #MF-264 Computer Center



Dormers

- Twin Peak Dormer on 3/12 Roof
- Twin Peak Dormer on 5/12 or 7/12 Roof
- High Profile Fold-Down Dormer with Full eave on 5/12 Roof
- High Profile Fold-Down Dormer with Full eave on 7/12 Roof

Entertainment Centers

- #MB-286 Entertainment Center

Exterior Doors

- 6-Panel Rear Steel Door with Storm
- 9-Panel Steel Front Door
- Oval Leaded Glass Steel Front Door
- Round Top Steel Front Door
- Transom Over Front Door
- Vinyl Sliding Glass Door
- Swing Patio Door
- 9-Lite Steel Rear Door with Storm Door
- 12-Lite Steel Door
- House Type Tear Door with Storm
- Door Surround

Exterior Lights

- Brushed Nickel Coach Light
- Nickel Lantern Light

Faucets - Empire

- Standard Kitchen Faucet
- Tub Faucet
- Bathroom Lav Faucet
- Shower Head and Handle
- Utility Sink Faucet

Faucets - Huntington Brass

- Kitchen Faucet with Pull-Out Sprayer
- High Rise Kitchen Faucet
- Bathroom Lav Faucet
- Glamour Tub Faucet
- Rainfall Shower Head
- Adjustable Shower Head
- Tub/Shower Head & Faucet
- Bar Sink Faucet
- Utility Sink Faucet

Fireplaces

- Tile Fireplace
- Brick Fireplace
- Deluxe Oak Fireplace
- Full Stone Fireplace
- Half Stone Fireplace
- Half Stacked Stone Fireplace
- Aspen Fireplace
- Fireplace Bump-Out
- Bookcase & Entertainment Center
- Drywall Niche Fireplace

Hutches

- #MF-47 Hutch 78"
- #MF-110 Corner Hutch

Interior Doors

- 6-Panel Woodgrain Doors
- 6-Panel White Door
- French Doors
- Lever Door Handles

Interior Lights

- Strip Lights over Bathroom Mirror
- 2-Arm Lights over Bathroom Mirror
- Hanging Light
- Stem Lights over Kitchen Islands
- Recessed Eyeball Can Light
- Recessed Can Light
- 48" Recessed Fluorescent Light
- Surface Mount Fluorescent Light
- 24" 2-Head Track Light

Kitchen Islands

- 30x40 Island with Pull-Out Drawers
- 30x60 Island with Pull-Out Drawers
- 36x72 Island with Pull-Out Drawers

Kitchen Pantries

- #MF-330 Pantry
- #MF-51 Pantry
- #MF-209 or #MF205 Pantry



Kitchens

- Stainless Steel Sink
- White Porcelain Sink
- Ceramic Backsplash
- Full Ceramic Backsplash
- Laminate Bevel Edge Countertops
- Ceramic Edge Countertops
- Plate Rack
- Wine Rack
- Lazy Susan
- Smooth Top Cooktop
- Staggered Height Overhead Cabinets
- 42" Height Overhead Cabinets
- Pull-Out Shelves in Base Cabinet
- Wood Bell Range Hood with Ceramic Insert

Miscellaneous Options

- White or Oak Window Sills
- Rustic Interior Package
- Sony Under Cabinet Audio System

Oil Rubbed Bronze Package

- Bedroom or Hall Light
- Foyer Light
- Nook Light
- Stem Lights over Kitchen Islands
- 2-Arm Lights over Bathroom Mirror
- 18" Strip Light
- Dining Room Light
- Cabinet Door Pulls
- Cabinet Door Knobs
- #MO-103A Medicine Cabinet
- Door Hinges
- Door Knobs
- Lever Door Handles

Paddle Fans

- Brushed Nickel Paddle Fan with Lights
- Deluxe Brushed Nickel Paddle Fan
- Deluxe Oil Rubbed Bronze Paddle Fan

Porches

- Composite Porch Decking
- 8' Porch
- 12' Porch

Roofs

- 5/12 Roof
- 7/12 Roof
- Saddle Roof (5/12 Roof only)

Sidings

- Aspen Front Entry
- Aspen Columns Full
- Coastal Shores Dutch Lap Siding
- Craneboard Siding
- Sandstone Package
- Vinyl Shake

Utility Room

- Louvered Utility Room Door
- Coat Rack
- 30", 36", 52" or 60" Bench
- Utility Sink
- #MO-89 Cabinet over Washer/Dryer

Windows

- Window Lineals
- Picture Window at Kitchen Sink
- Single Transom Window
- Archtop Muller Window
- Picture Window replacing 1, 2, or 3 Windows
- Bay Window #4
- Bay Window #35
- Bay Window #36
- Bay Window #38
- Octagon Window

Your purchase contract including options is with your retailer who is an independent contractor, not our agent, and is responsible totally for any alterations, exchanges, additions or attachments made in or to your home.

All descriptive representations of the products on this brochure are believed to be correct at the time of publication. However, due to continued product improvement and changes in suppliers design and production, accuracy cannot be guaranteed. Therefore, equipment colors, material specifications, prices and model availability are subject to change without notice.

© 2009 The Commodore Corporation, All Rights Reserved